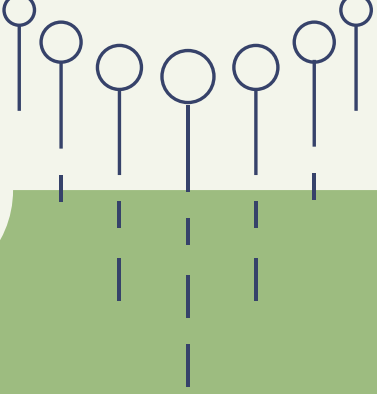




**NURTURE & GROW
CHILDCARE**

Funding
EXPLAINED



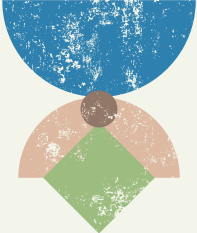






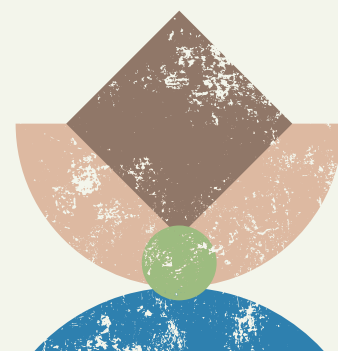
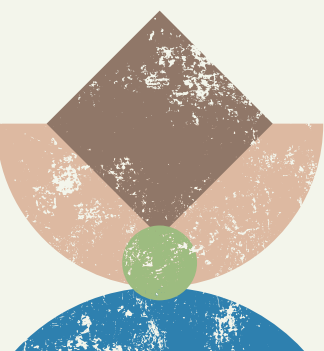


Table of Content

	Government Funding - How it works	01
	How we calculate fees	02
	What does the enrichment fee cover?	03
	How to apply for funding	04
	Other financial support	05
	Need help?	06



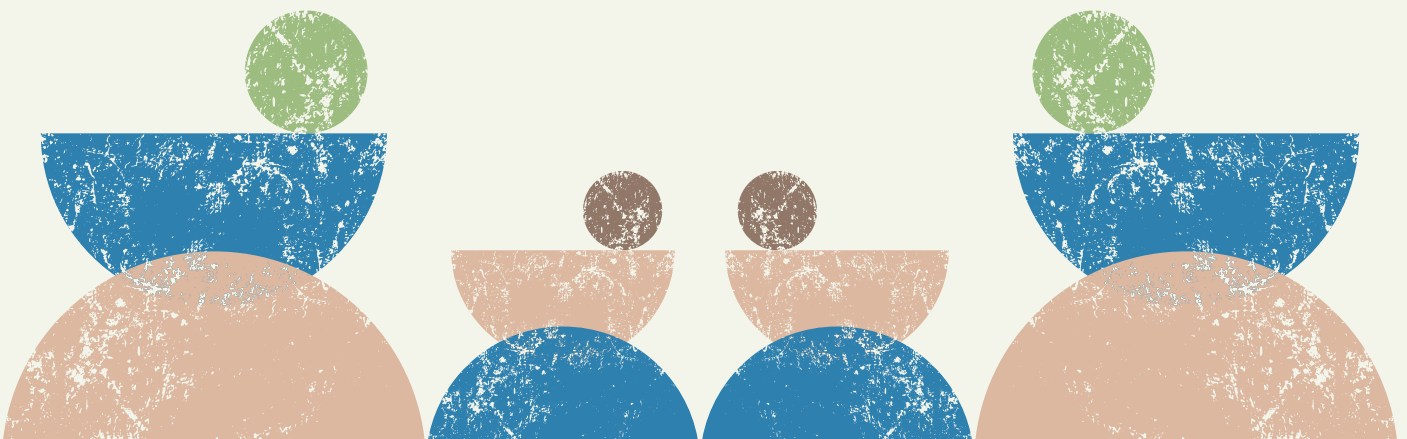


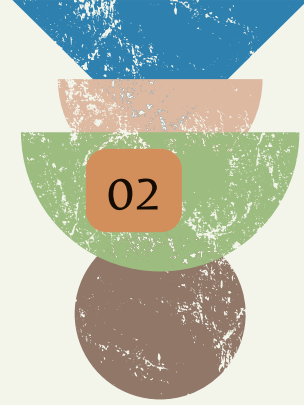

Government Funding – How It Works

We receive government funding to help with childcare costs! Eligible families can receive:

🕒 15 or 30 hours per week
(Term Time Only – 38 weeks)

🌍 11 or 22 hours per week
(All-Year Round – Stretched Funding)





How We Calculate Fees

We use the local authority average funding rate to keep pricing fair and transparent.

Invoices are annualised, spread evenly across 12 months.



How we calculate monthly fees for funded children:

Session cost - Funding + Enrichment Fee = Monthly total

Enrichment Fee Breakdown (per funded hour)

 £1 – Food

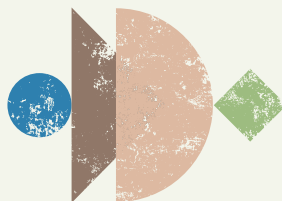
 50p – Resources

 £1 – Nappies & wipes

Total: £2.50 per hour

✓ Only applied to funded hours

For a full breakdown of our current fee calculation please read our 'Fees At A Glance'



What is an Enrichment Fee?

Government funding is designed to cover the basic childcare provision only. To support the additional experiences and resources that enhance your child's time with us, we apply a fee of £2.50 per funded hour to funded sessions. This voluntary contribution helps us provide a richer nursery experience, including:

- 🍏 Snacks and food consumables
- 🍼 Nappies and wipes
- 🎨 Additional activities and experiences
- 🎉 Celebrations and seasonal events
- 📚 Extra learning resources and materials

Our aim is to create a nurturing, engaging environment where children can explore, learn and thrive through a wide range of experiences. 🌱 ✨

If you have any questions about this fee, please speak to our Nursery Administrator for clarification.

How to Apply for Government Funding

🔍 Check eligibility & apply: www.childcarechoices.gov.uk

📌 Already eligible? You'll need to get your 30-hour code and update it every 3 months!

📌 Update your code:
www.gov.uk/sign-in-childcare-account

💡 We use Funding Loop!

This makes applying and managing funding super easy ✅
You can track your funding balance, payments, and updates all in one place! 🎉

Other Financial Support for Parents

Working Parents – Tax-Free Childcare

Did you know you could save 20% on childcare costs? 🎉

The government contributes £2 for every £8 you pay!

 Check eligibility & apply here:

www.gov.uk/tax-free-childcare

Universal Credit – Help with Childcare Costs

If you're eligible for Universal Credit, you can claim back up to 85% of your childcare costs! 🏠

 Check eligibility & apply here:

www.gov.uk/help-with-childcare-costs/universal-credit

Need help?

We're here to support you! ❤️ If you have any questions about funding, applications, or payments, just ask! 😊



 CALL US:
01908 501032

 EMAIL US:
hello@nurtureandgrow.co.uk

ADDRESS

128 Dunthorne Way
Grange Farm
Milton Keynes
MK8 0LW

